

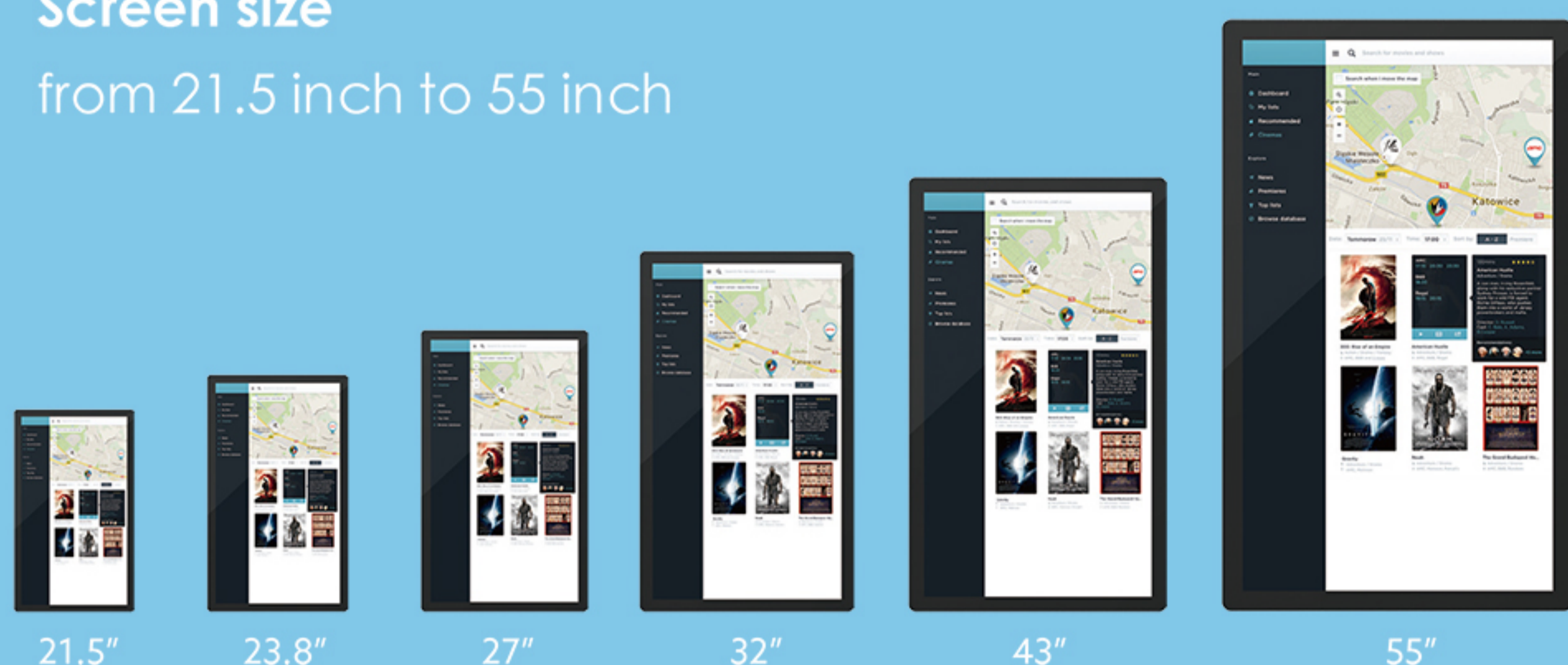
32 INCH TOUCHSCREEN COMPUTER

TC-3200

- Multi-point capacitive touch technology provides rich interaction and convenient content management
- Support Ethernet and WIFI
- Network remote management, can transfer contents through computer, mobile phone or USB interface
- Support timing switch, network wake-up, screen dividing or multi-screen splicing display

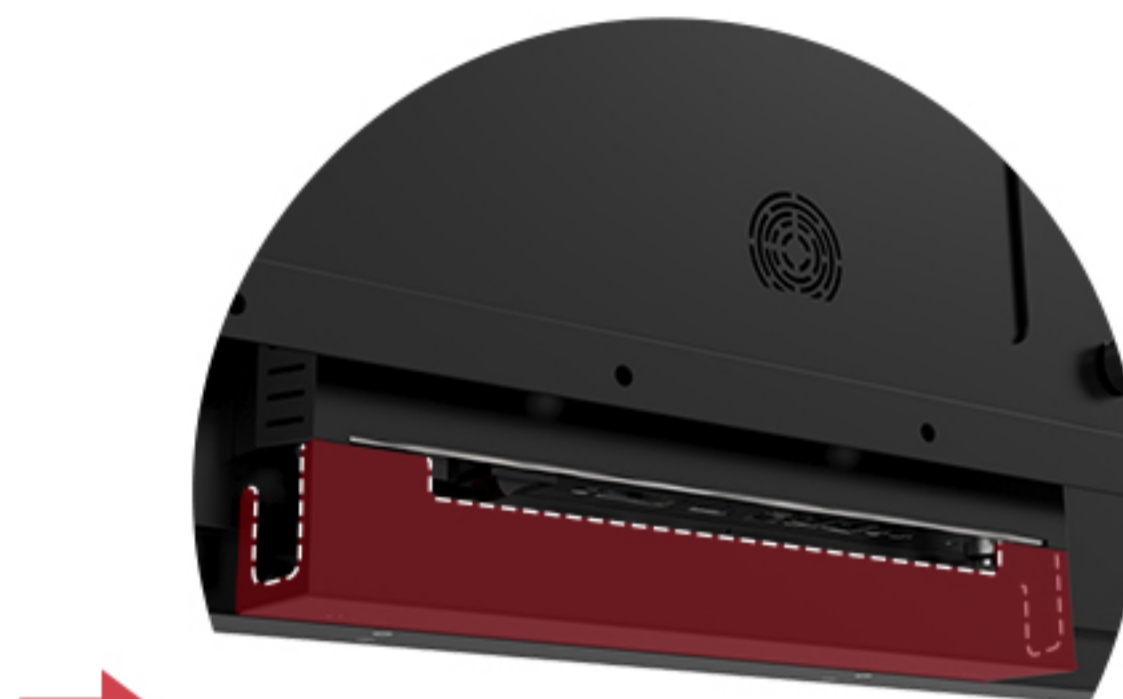


Screen size
from 21.5 inch to 55 inch



Cable Cover Protect Wires In Public

A cable cover is specially designed on the back plate to protect the power supply and wires. It has three opening for easy routing. The cover can be removed for maintenance by loosening the screws. Cable cover prevents the wires and switches from being damaged, unplugged or touched at will, which effectively protects the machine when it is used in public or unattended commercial space.



Cable Cover
Three opening

Flexible mounting options

- wall mounting
- ceiling mounting
- stand mounting



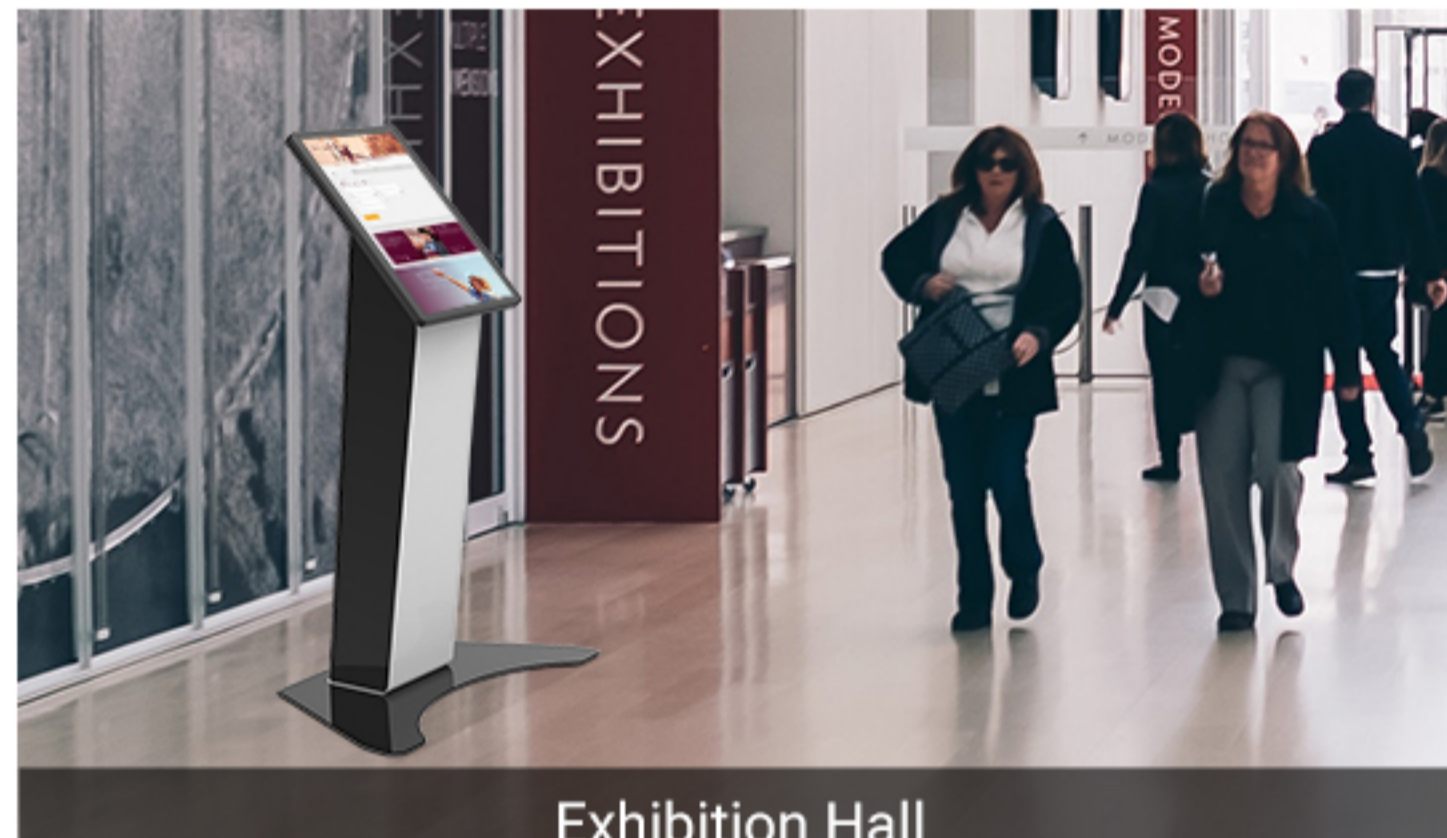
APPLICATIONS



Hotel



library



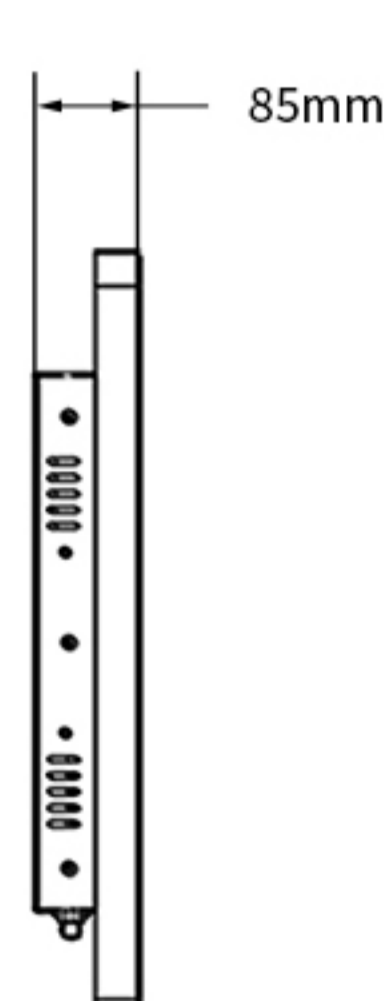
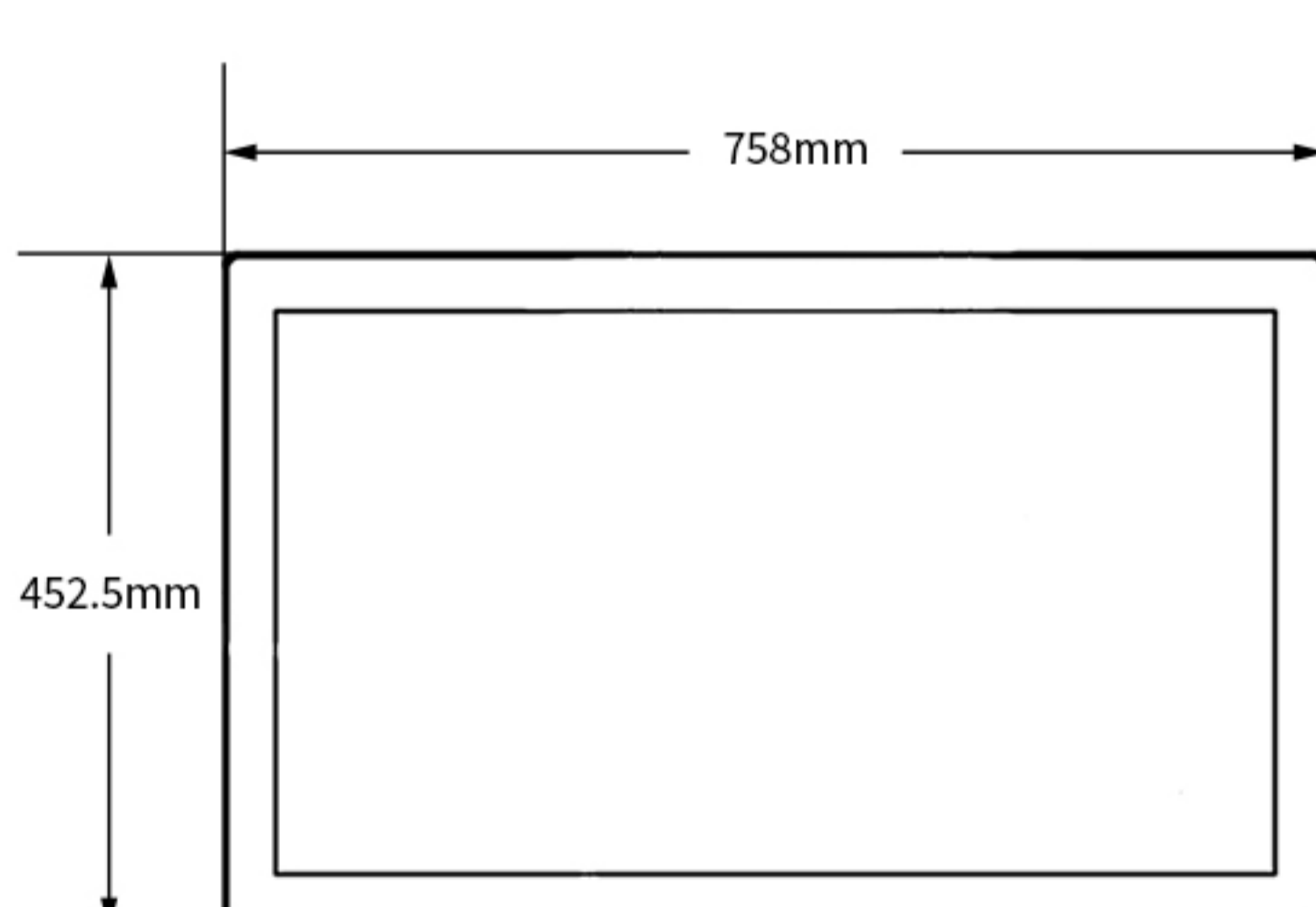
Exhibition Hall



Building

SPECIFICATIONS

TC-3200



(Unit mm)

System				
OSSupport	WIN10（trial version）		Android 11	
CPU	Intel celeron J6412 quad-core 2.0G		RK3568 Cortex-A55 quad-core, 2.0 GHz	
System Memory	4G/8G		2G/4G	
Disk	128G/256G(SSD)		16G/32G	
Interface				
Speaker	5W*2		5W*2	
Interface	USB*4/RJ45*1		USB*2/RJ45*1	
Network	Ethernet/WIFI		Ethernet/WIFI	
Screen				
Type	Projective capacitive touch(10 points)		Response Time	10ms
LCD				
Type	TFT-LCD		Contrast Ratio	1200:1
Screen Size	32 inch		Response Time	8ms
Max Resolution	1920x1080		Viewing Angle	H178° V178°
Aspect Ratio	16:9		Display Colors	16.7M
Brightness	400cd/m²		Refresh Rate	60Hz
Panel Life	30000 hours			
Power				
Voltage	100-240VAC , 50/60HZ		Power	<60W
Packing Info				
Material	SPCC		Surface	Powder coating
Overall Size	L758xW85xH425.5 mm		Net Weight	20.5kg
Package	L880xW210xH600 mm		Gross Weight	24.5kg
Application				
Working Temperature	0~40℃		Storage Temperatuaure	-20~60℃
Working Humidity	20%~80%		Storage Humidity	10%~90%
Application	Indoor			