

High End Cash Drawer HD-1818

High End Cash Drawer with robust structure, high security keylock and easily-detachable ball bearing slides, for more stable, reliable and quieter operation.

Model No.	HD-1818
Dimensions(mm)	460W×460D×120H
Dimensions(inch)	18.1W×18.1D×4.7H
Cash Tray	5 Bills / 5 Coins
Lockset	3-Position Keylock
Material	SPCC
Net Weight	12.9kg



FEATURES



Artistic Drawer Front

Heavy-duty Steel Construction

High end series is made of thickened heavy-duty steel, and features easily-detachable ball bearing slide and removable cash tray. Rugged housing with load capacity up to 50 KG. High-quality slide ensures the stable, reliable and quiet operation even under heavy loads.

Large Capacity and Flexible Storage

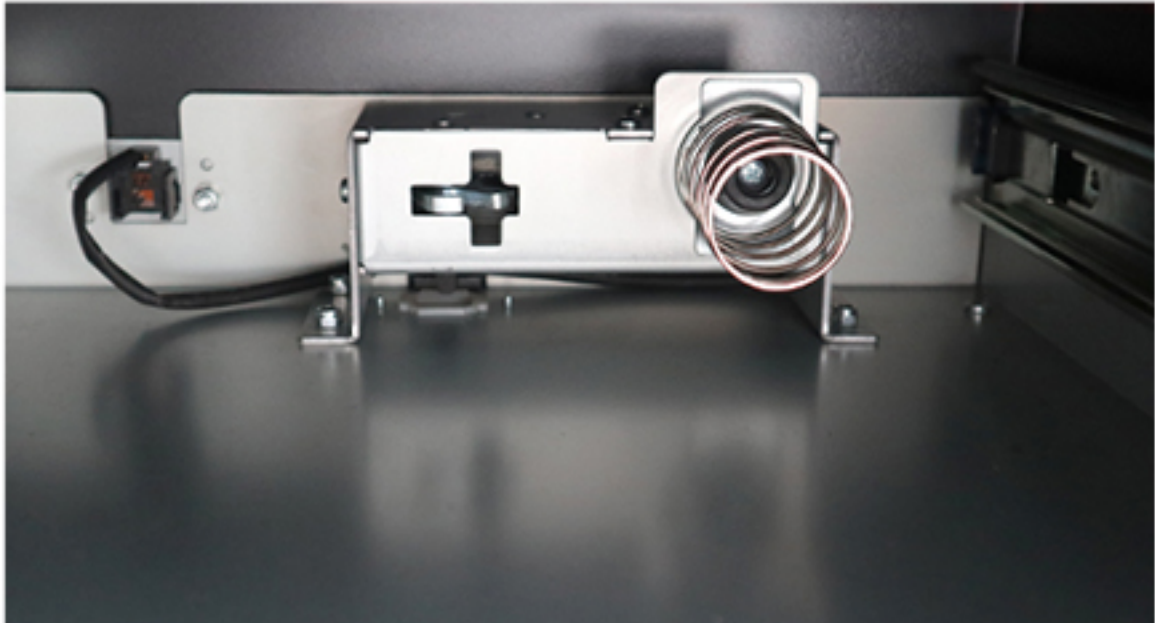
The large size provides plenty of internal storage . Specially designed for US coins and banknotes, the cash tray has 5 coin compartments and 5 note compartments. Extra space under the removable cash tray for secure storage of large bills, coin rolls, paperwork and more. Two media slots on the front plate allow quick inserting cheques and gift cards.

Special Protection of Release Mechanism

As the most important module of cash drawer, release is tightly surrounded by metal (except spring). Keeping excellent performance under rigorous daily use. Based on laboratory tests, the release mechanism can withstand more than one million openings.

Screwless Bottom & Removable Interface

For more security and humanized operation.



Solid Release Mechanism for more strong and security



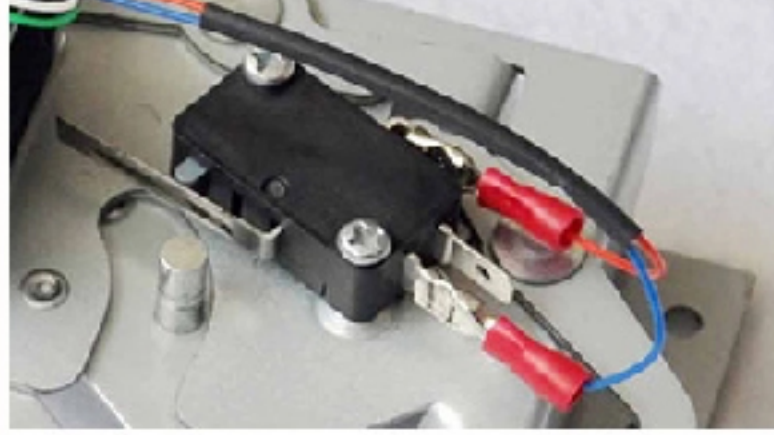
Screwless Bottom



Removable Interface

OPTIONS

■ Micro Switch



■ Lockable Cover of Cash Tray



■ Stainless Front Panel

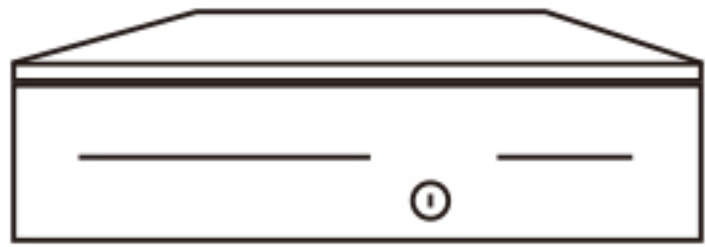


■ Under-mounting Bracket



PACKING LIST

① Cash drawer×1



② Cable×1



③ Key×2

