

# 30° Tilt Wall Mounting Bracket

MW-1100

- 30° tilt, angle adjustable
- Compatible with displays 32"-55"



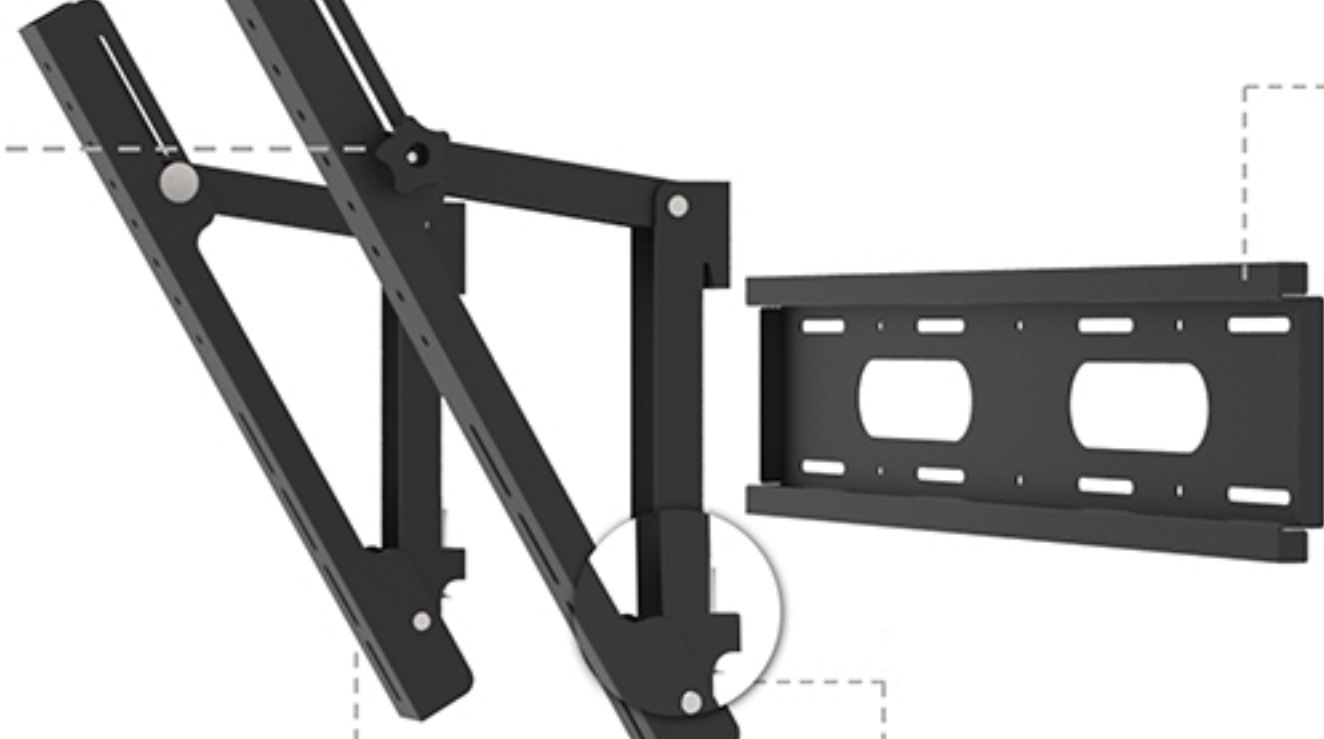
## FEATURES



Plum Handle Nut



Vertical Mounting Rack  
30° tilt, angle adjustable



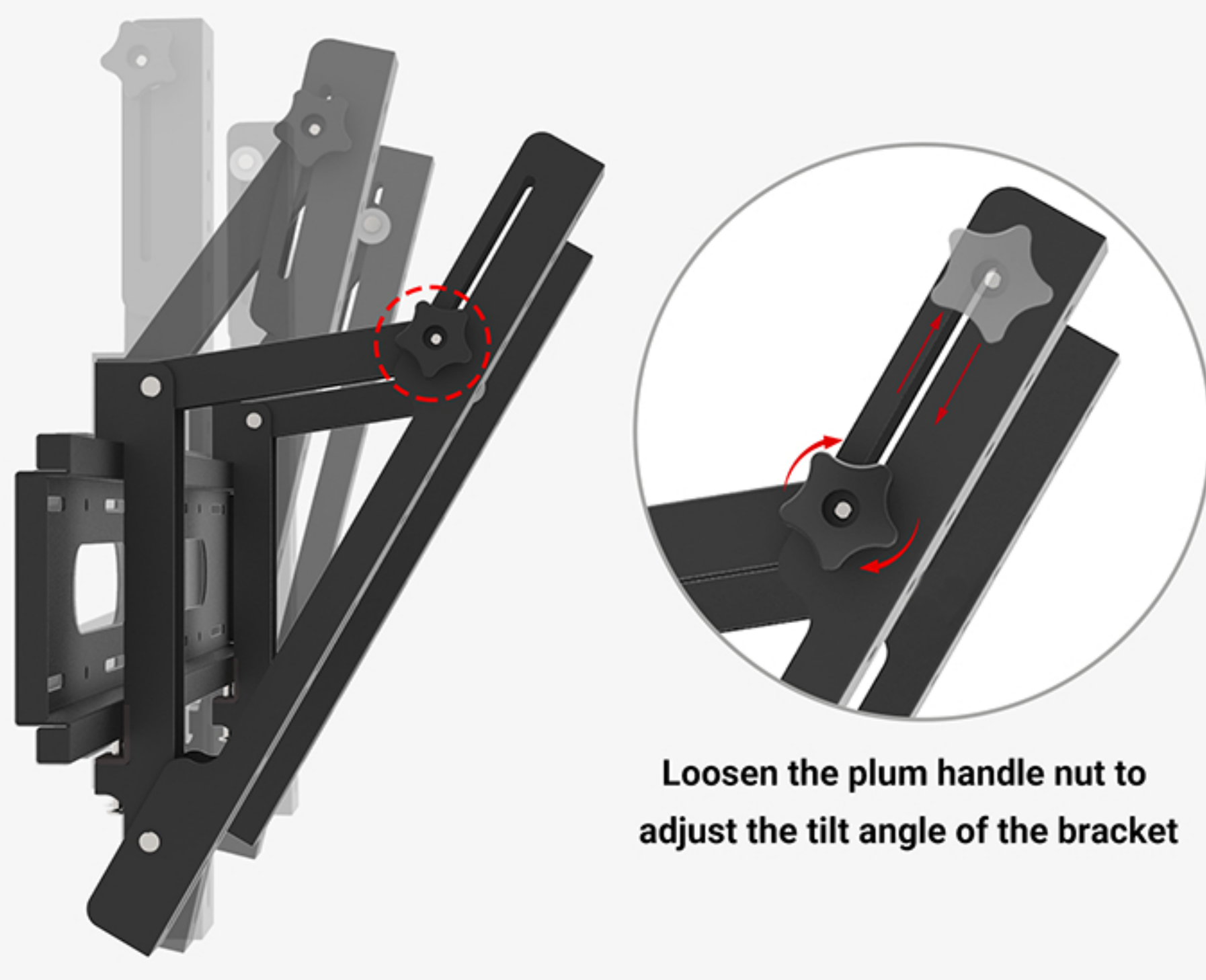
Horizontal Mounting Panel



Long Screw

## 30° Tilt, Angle Adjustable

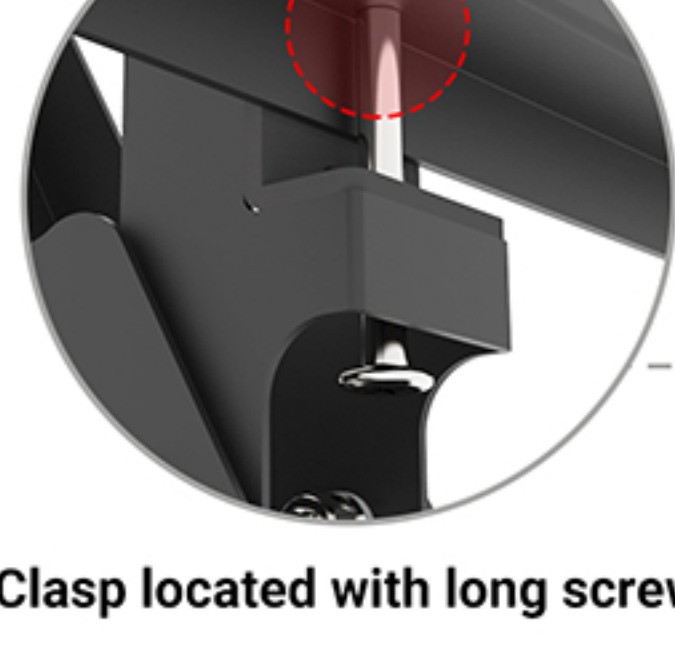
The bracket can be tilt up and down within 30° to fit the suspension height of screens of different sizes.



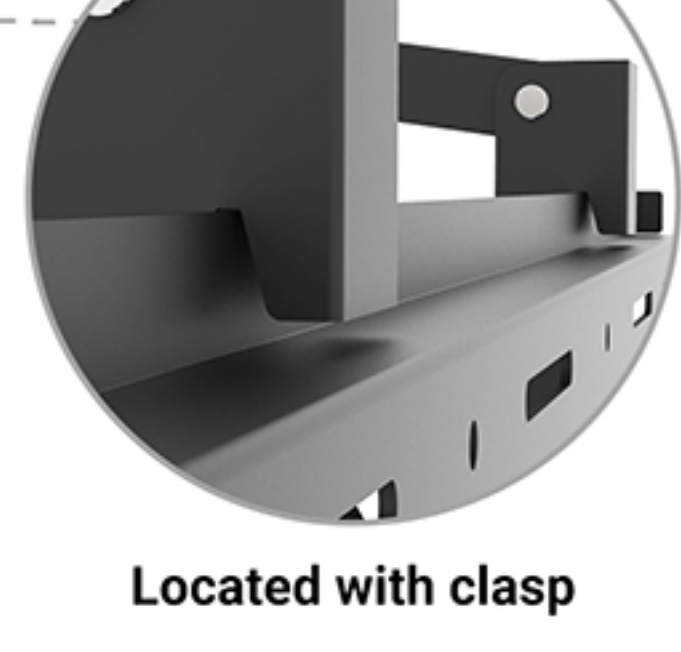
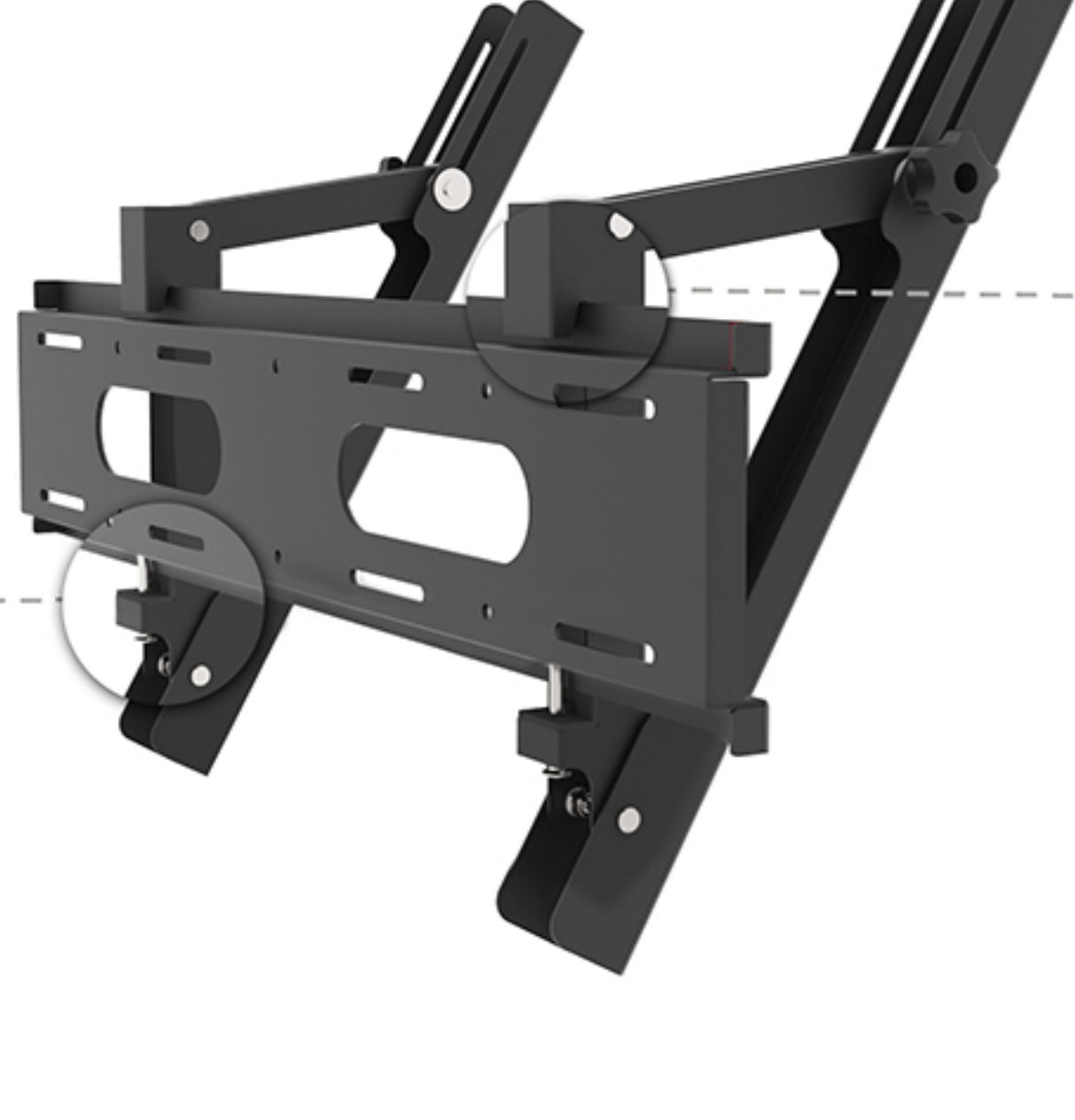
Loosen the plum handle nut to adjust the tilt angle of the bracket

## Easy Installation

During installation, the screen can be locked on the vertical mounting rack first, then directly hung on the horizontal mounting panel. A row of mounting holes are distributed on the vertical mounting rack to facilitate the installation of the screens of different sizes. Located with clasp above the vertical rack and clasp of the long screw below keep the screen from falling off.



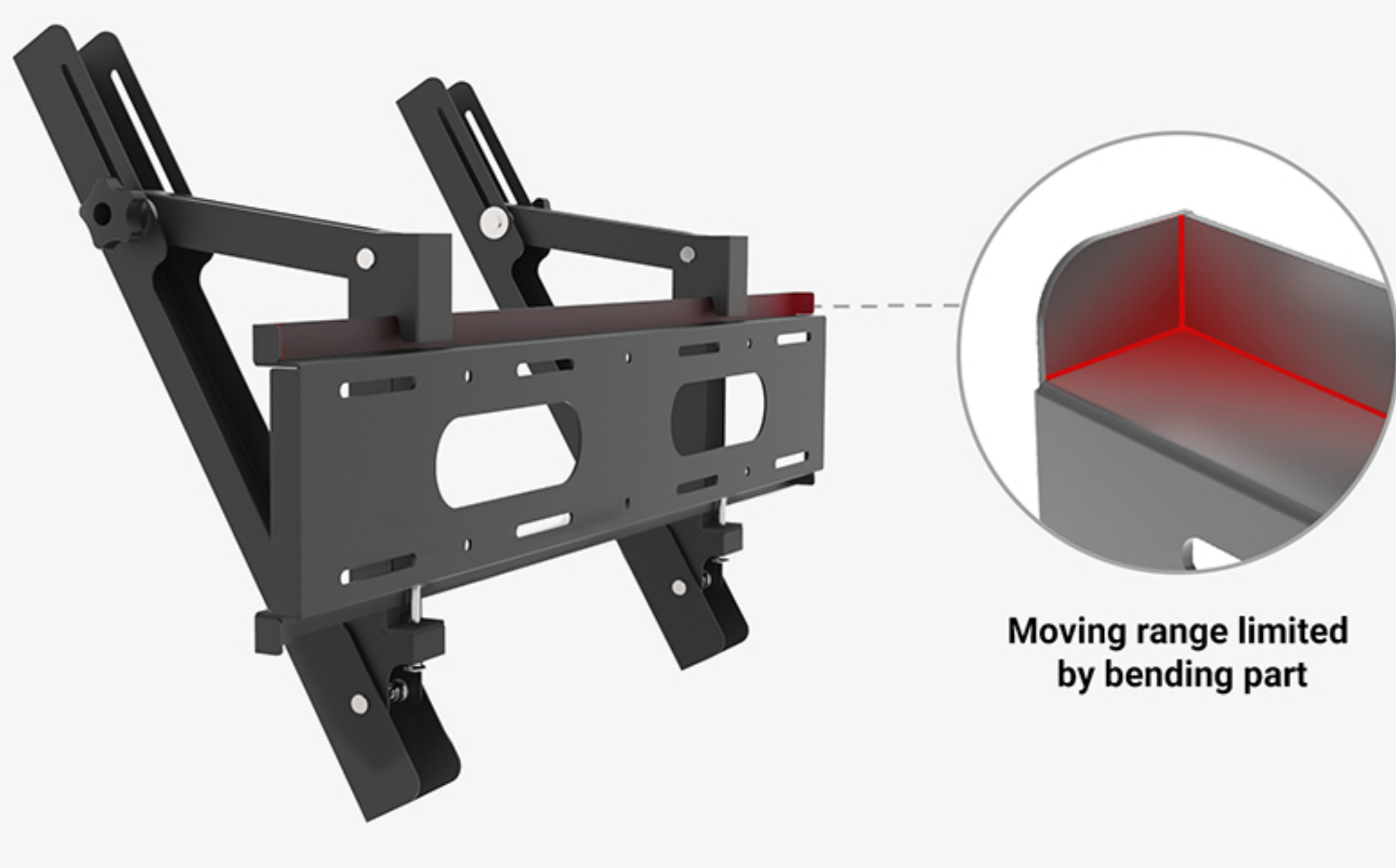
Clasp located with long screw



Located with clasp

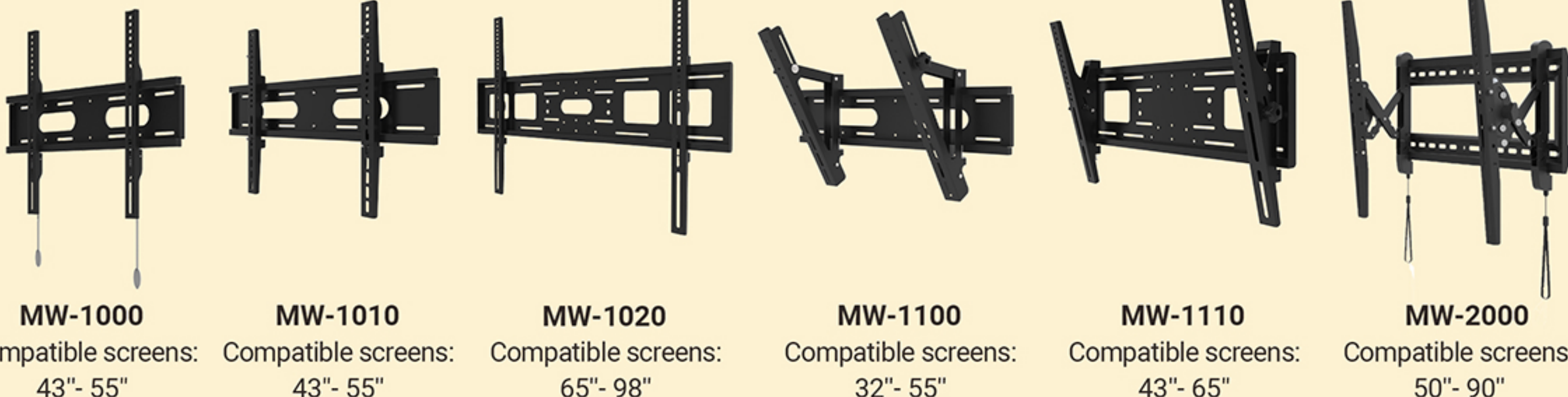
## All Sheet Metal Structure with Durability Design

The MW-1100 mounting bracket adopts the design of physical and mechanical structure, and is made of high-strength SPCC steel by integrated stamping, solid and durable. On both sides of the horizontal mounting panel, the bending baffle is designed to limit the horizontal motion range of the vertical mounting rack and prevent the screen from falling off. It can also increase the load-bearing strength of the horizontal mounting panel to ensure the safety in use. The plum handle nut can adjust the tightness of the installation, effectively extending the service life of the bracket.



Moving range limited by bending part

## Commercial Display Bracket Wall-mounting Series



MW-1000

Compatible screens: 43"- 55"

MW-1010

Compatible screens: 43"- 55"

MW-1020

Compatible screens: 65"- 98"

MW-1100

Compatible screens: 32"- 55"

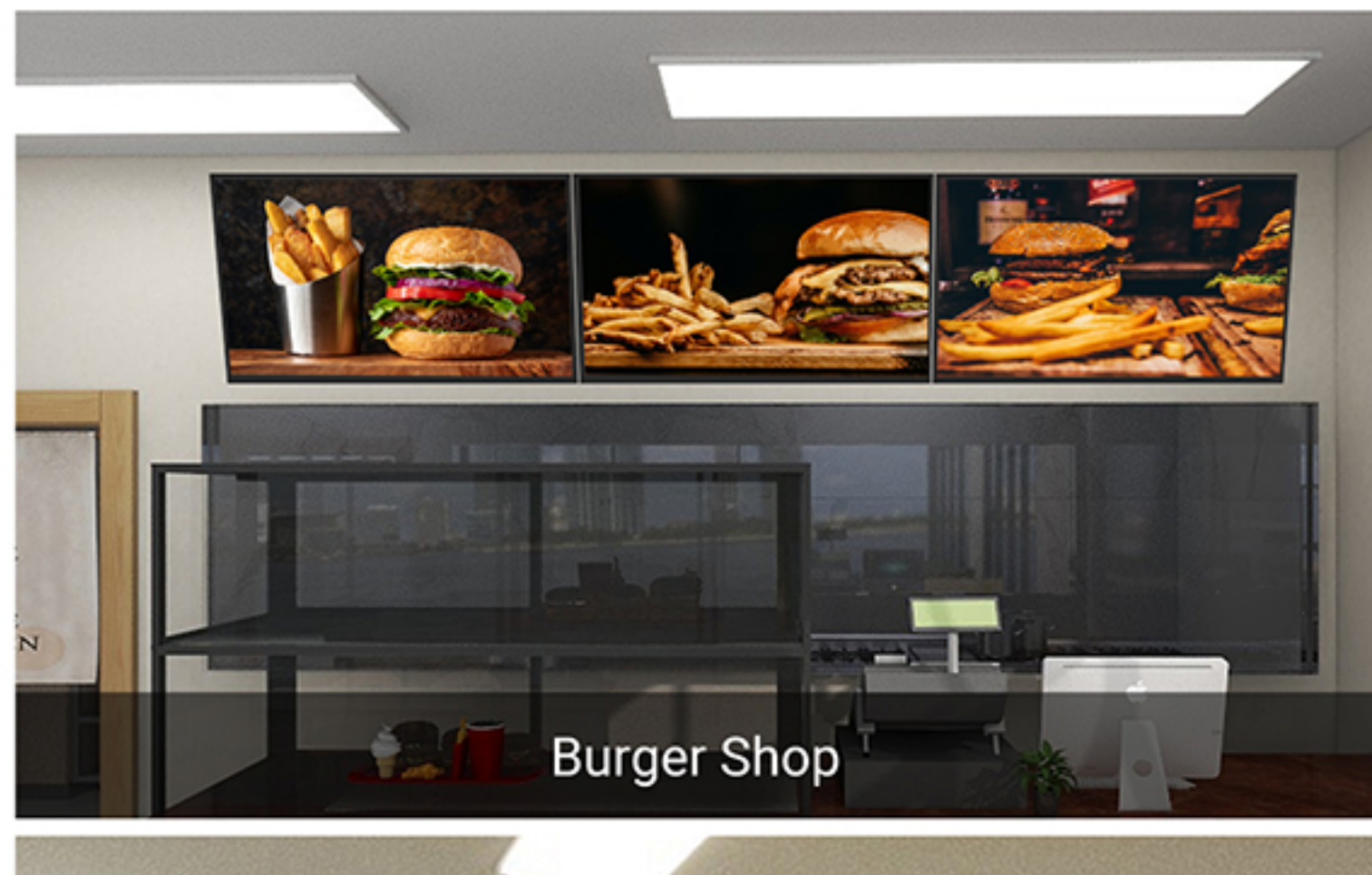
MW-1110

Compatible screens: 43"- 65"

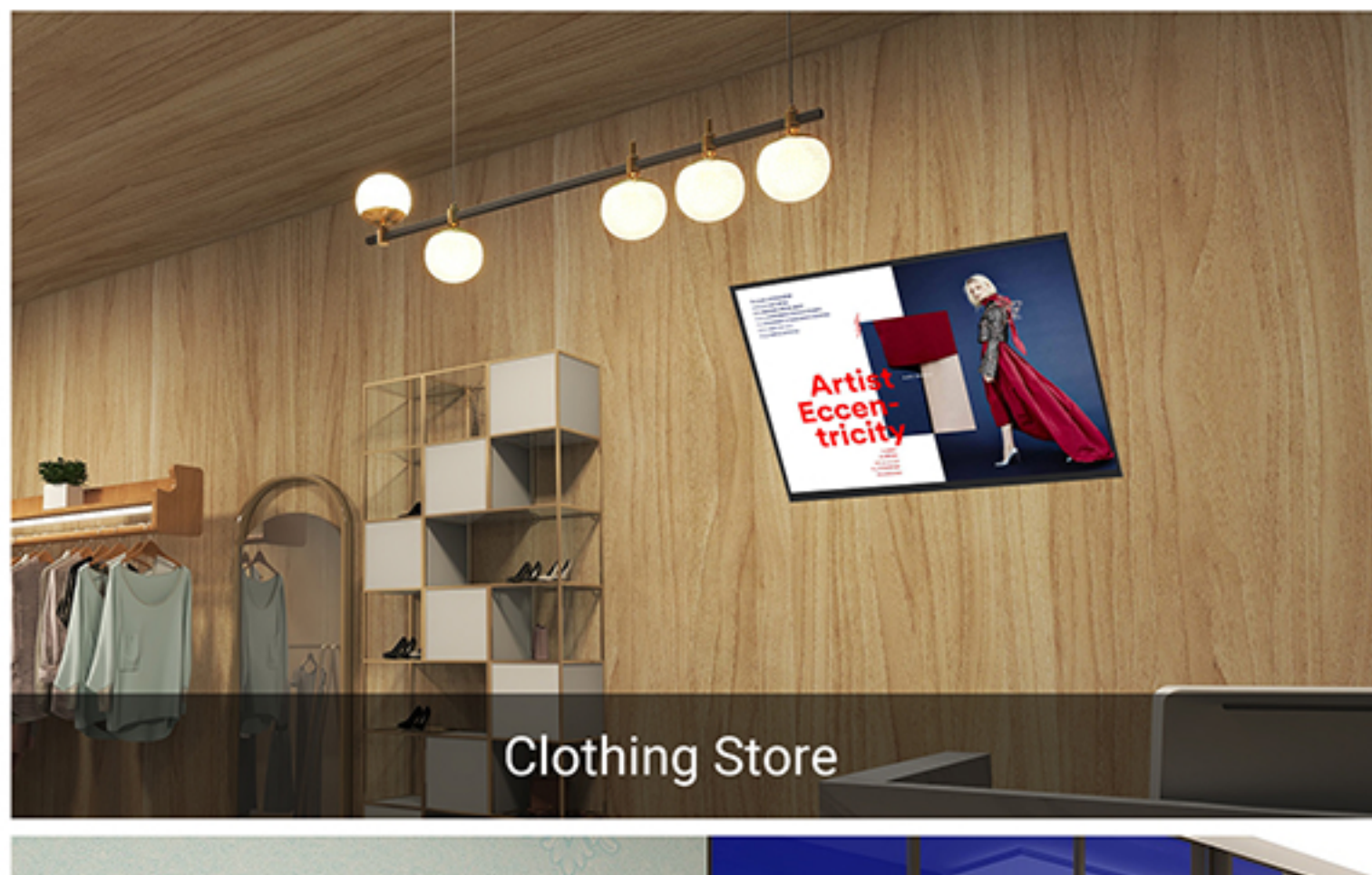
MW-2000

Compatible screens: 50"- 90"

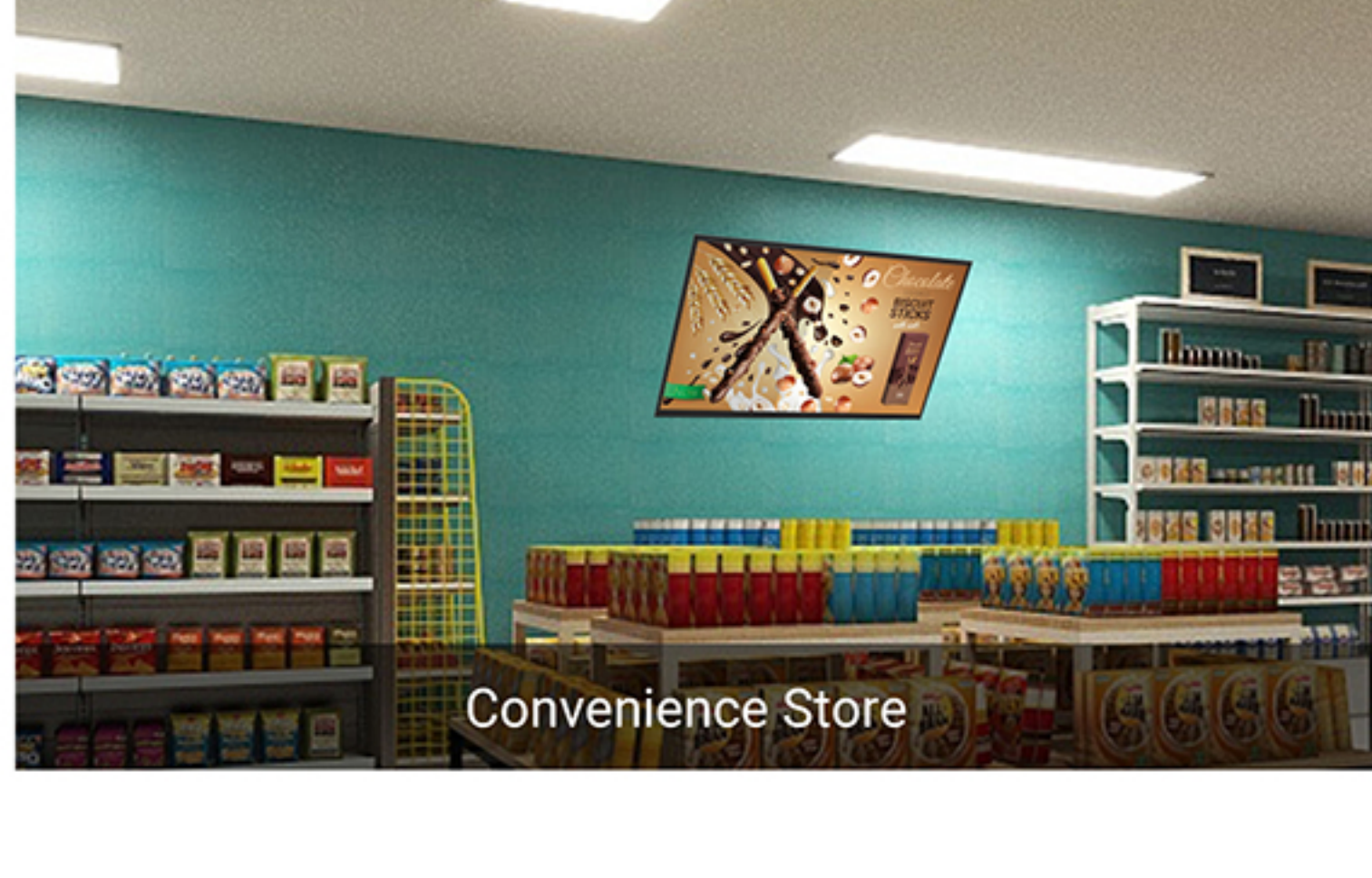
## APPLICATIONS



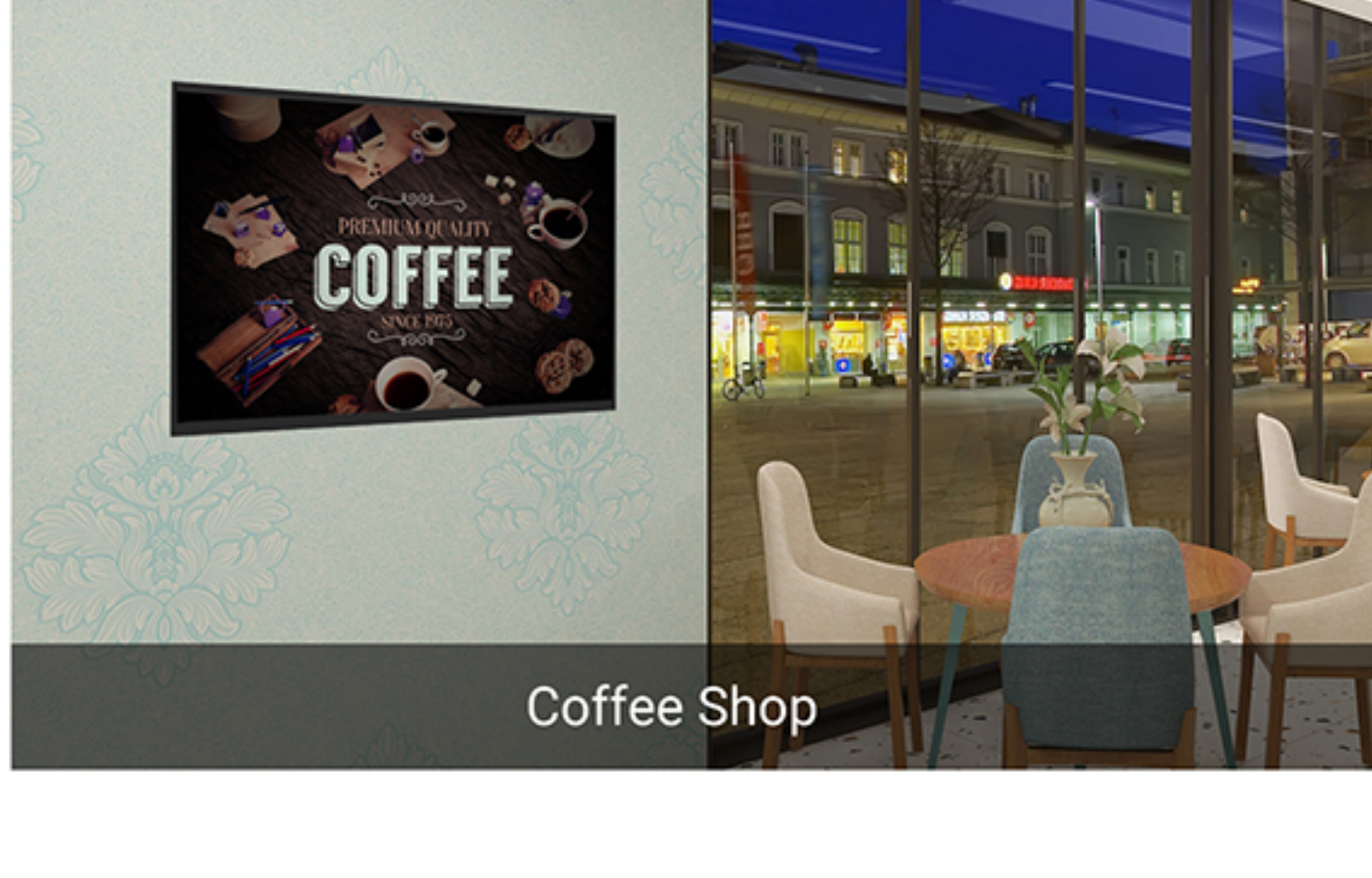
Burger Shop



Clothing Store

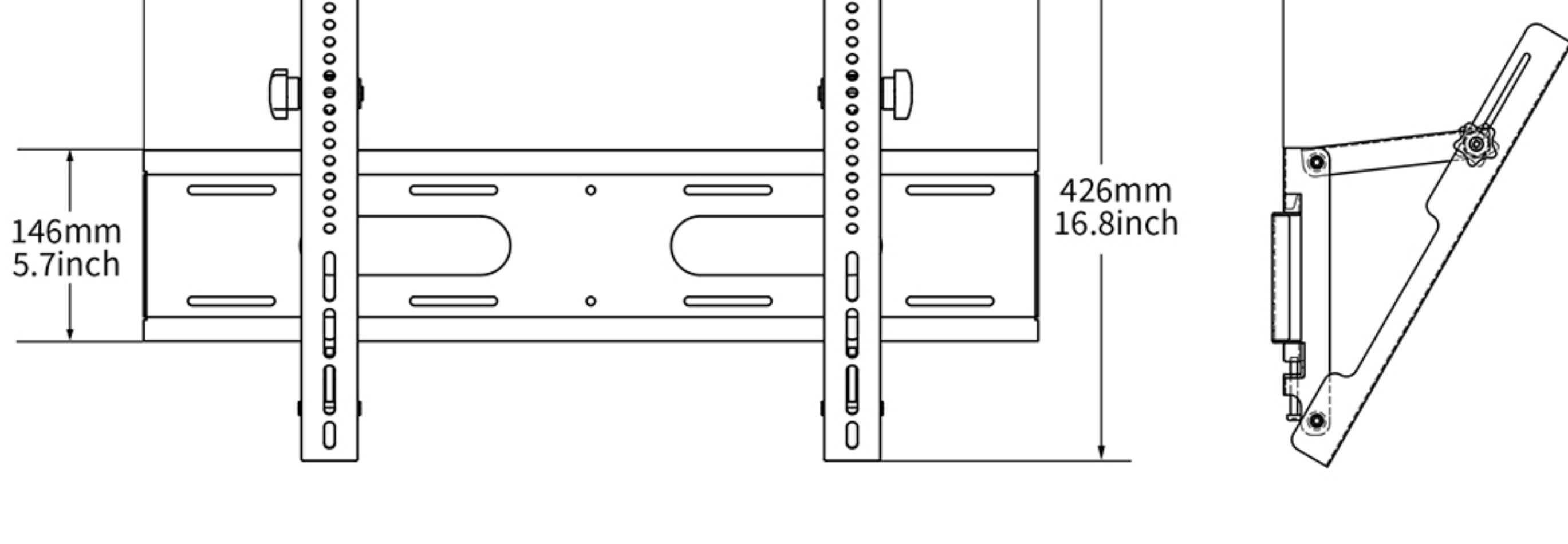


Convenience Store



Coffee Shop

## SPECIFICATIONS



Model No.	MW-1100
Compatible Screens	32"- 55"
Material	SPCC
Surface Finishing	Power coating
Overall Size (mm)	684.5x251x384.5
Package (mm)	165x115x710
Net Weight	3.7kg
Gross Weight	4.2kg
Colors	Black (option)